

A decorative graphic of a musical staff with notes, starting from the bottom left and curving upwards towards the top right. The staff is black, and the notes are black with stems. The notes are scattered across the staff, some on the lines and some in the spaces. The staff is set against a white background with a subtle reflection effect.

SURREY SCHOOL DISTRICT

BAND HANDBOOK

Contents Include:

1. District Parent Letter
2. Letter from Ms. Kennedy
3. Band Procedures
4. Information Sheet

For more information, visit our website at www.cloverdaleelementarybands.weebly.com

To Parents of Band Students:

Your child has the opportunity to join the grade 7 band. This opportunity should be taken seriously, as it may be the best chance in your child's life to learn instrumental music. The expectation is that your child spends the full school year in band once he/she signs up; your child's interest and ability cannot be accurately assessed with less than a full year's effort.

Parents should encourage their children to try the band program because band students do well in school! Educational research and our own experience shows that band students become more involved in their education, obtain higher grades, and receive more scholarships than non-band students. This is because they become part of a team of students who are constantly striving for success and perfection in music and this attitude spills over to other subject areas.

A student can eventually use the acquired musical skills to play any kind of music desired, whether that is concert band, symphonic, jazz, rock, folk, bhangra, country and western or popular music. It is essential however to learn the basics of music performance first by learning to play a musical instrument and to read music. This is what is taught in the Grade 7 Band Program.

GRADE 7 BAND PHILOSOPHIES:

"The Surrey School District elementary band program is available to all Grade 7 students. A component of the Fine Arts strand, this program is offered in all schools by specialist teachers. It is a child-centered program in which most children are introduced to the challenges of a band experience for the first time."

"Intended learning outcomes include development of individual and group music skills, opportunities for performance and appreciation of the performing arts."

"The elementary band program should be viewed as an integral part of the total school experience."

OBTAINING AN INSTRUMENT

Grade 7 Band is the first step in a 6 year consecutive band program offered by Surrey School District. As this first step sets the groundwork for your child's future in band, it is most important that a good quality instrument be obtained. Most students acquire their own instrument in one of the following manners (if acquiring an instrument presents a particular problem for your family, please contact the school and every effort will be made to find an individual solution):

- 1. Rent or rent-to-own a new instrument:** Rental from a music company is the method most recommended by your band teachers. A substantial portion of the rent will be applied to the purchase price if you decide to buy the instrument at a later date. You may rent directly from the music store of your choice.
- 2. Purchase a new or used instrument from a music store:** Purchasing outright is the least expensive means of buying an instrument in the long run, although it does not provide as much flexibility as renting.
- 3. Purchase used instruments from private party:** Sometimes bargains can be found, but be wary; in almost every case they require servicing! Please make certain it is serviced early in September.
- 4. Borrow:** Once again, be wary; a borrowed instrument almost always needs servicing. Please have it serviced early in September.
- 5. Purchase from a non-music store:** Recently, non-music stores have been offering some band instruments for sale. These instruments are usually less expensive than those found at music stores, but the quality of the

instrument is often inferior. Students usually find these instruments very difficult to play properly and they are often difficult, if not impossible, to repair. The school district highly recommends that you rent or purchase instruments from a reputable music store.

It is highly recommended that you do not rent or buy any instrument until your child has consulted with the Grade 7 band director. Questions regarding which instrument your child will play should be directed to your child's band director.

MUSIC COMPANIES

The following companies are Surrey companies that are expected to provide good quality instruments, reasonable prices and respectful service to Surrey students.

Long and McQuade	-	13785 – 104th Ave Surrey	604 588-9421
Long and McQuade	-	207-6339-200th St Langley	604 530-8704
Long and McQuade	-	8291 – 120 Street, Delta	604 591-8525
Tapestry Music		1335 Johnston Road, W.Rock	604 538-0906
Tom Lee Music		10090 – 152 St. Surrey	604 588-3200
Tom Lee Music		19638 Fraser Hwy Langley	604 532-8303
Matterhorn Music		7788 – 132 Street, Surrey	604 596-7616

Rental Prices

Due to the competitive nature of the industry, Surrey enjoys some of the lowest rental rates in the country. Rental prices vary widely depending on several factors.

Saxophones are generally more expensive than other instruments.

Paying the whole year in advance is cheaper than paying by the month.

Some brands are more expensive than others. Generally, you can expect to pay the following price ranges if renting a new instrument. Be aware that most companies also have used instruments available at lower prices.

Flutes/Clarinets/Trumpets/Trombones - \$12.00 to \$22.50/month. Snare drum kits - \$12.00 to \$20.00/month.

Saxophones - \$22.00 to \$50.00/month.

Suggestions for Renting a Band Instrument

A. Prior to going to the music store:

1. Find out from your child which instrument the teacher has approved, and which Band Method Book the teacher requires.
2. Find out about insurance. Insurance for the band instrument is recommended. Most home insurance policies, for only a few dollars, can be adjusted to cover the instrument for all perils with no deductible. Or, you can purchase an insurance policy from the music store at the time when you rent the instrument. Check with both the music company and your home insurance company to find the best deal.
3. Be aware that only adults may rent an instrument. Do not send your student with an older friend or sibling. An adult with credit card and proper ID is required for most rental transactions.
4. Phone the companies listed above and ask about the following:
 - hours of business and best time to visit the store
 - exact cost of new or used rental instrument
 - initial payment requirements, payment frequency, etc.
 - cost of optional insurance premiums, and the amount you must pay (deductible) in case of loss or severe damage
 - cost of the Band Method Book

B. At the music store:

1. Specify the type of instrument you want and the name of the method book(s) your band teacher requires.
2. Ask about insurance in case of theft, damage, or mysterious disappearance of the instrument. What is the monthly charge, and what is the deductible charge if lost or damaged?
3. Make certain the following are included with the instruments:
 - Clarinets: 2 or more #2 reeds, reed guard, swab, cork grease, mouth piece cap
 - Saxophone: 2 or more #2 reeds, reed guard, swab, cork grease, mouth piece cap, neck strap
 - Flutes: swab and cleaning rod
 - Valve Brass: slide grease, valve oil mouthpiece brush, cleaning snake
 - Trombone: slide cream, mouthpiece brush, cleaning swab
 - Snare Kit: practice pad, sticks, and drum stand that is tall enough for stand-up drumming
4. Additional accessories you may wish to consider at this time:
 - additional reeds for clarinet and saxophone (a very good idea)
 - folding music stand
 - insurance as indicated above

FEEDBACK ON MUSIC COMPANIES

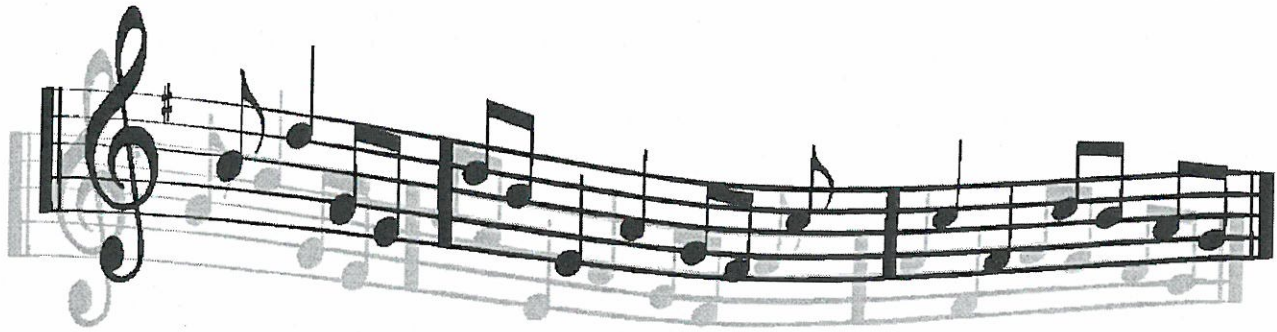
We are always trying to improve our processes and those of the companies we work with. Please share any comments with us regarding acquiring your musical instrument. Your comments will be held in confidence. If you encounter any problems or concerns dealing with the music store and cannot resolve it yourself, please contact your child's band teacher.

For questions regarding this communication, please contact your child's band teacher.

We sincerely wish you and your musical child an enjoyable Grade 7 band experience!

Yours sincerely,

Elisa Carlson
Director of Instruction
Education Services
School District #36 (Surrey)



Dear Band Student,

Thank you for joining band! I am so excited to be your teacher! We have a fantastic year of making music ahead of us and I hope to get you on your instruments as soon as possible.

If you have already played an instrument in band and would like to keep learning that instrument, great! If you are brand new to playing an instrument, know that you do **not** have to have an prior experience. Together we will learn how assemble your instrument, how to make sounds, and how to read music.

My hope is that we work together as a team to produce the best music we can. Every member of our team is indispensable.

This year you will be equipped with many resources to help you become successful and I encourage you to use all of them! I am always available by email if I'm not at your school that day. Also, your method book (Essential Elements for Band) is a useful tool. Additionally, we have a class website which can be found using the QR code you see below.

Musically Yours,

Ms. Kennedy
Elementary Band Director
Surrey School District



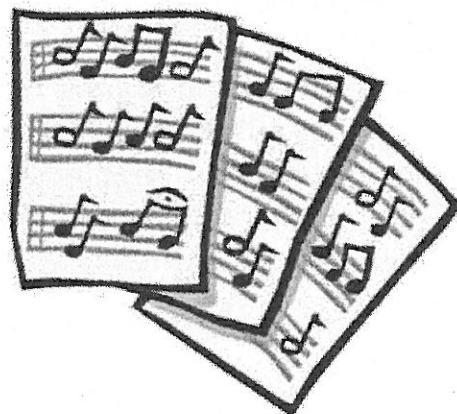
Band Procedures

1. Be on time!
2. Be prepared!
3. Give the conductor your complete attention at all times!
4. Always try your best!

REQUIRED MATERIALS

For *EVERY* class, you will need the following:

1. Instrument
2. Music (method book and sheet music)
3. Folder
4. Pencil
5. Positive Attitude



GRADING SCHEME

30% - Tests and Performances

- Playing test will take place during class time
- Students who are absent the day of the playing tests are responsible for coming in after class to perform their test (or submitting a video recording)
- Students may re-do a playing test up to two weeks after the test date
- Performances are mandatory

10% - Assignments

- Assignments will be given to enhance the musical experience and knowledge of instruments

60% - Participation (Daily Grade)

- Marks will be deducted when a student forgets necessary supplies for class: **INSTRUMENT, MUSIC, MUSIC FOLDER, and PENCIL**
- Effort, Progress, Rehearsal Skills, and Technique
- Marks will be deducted when a student is late
- Marks will be deducted if a student is not being respectful of proper rehearsal procedures (see below)

REHEARSAL PROCEDURES

- Students have five minutes at the beginning of each band class to get prepared to play and to start to warm-up. Any student who is not ready to begin rehearsing with the rest of the band after this five-minute period is considered late
- Rehearsal Format:
 - Assembly of instruments – five minutes

- Warm Up
 - Announcements
 - Tuning
 - Technical Exercises (scales, rhythm studies, chorales, new fingerings, etc.)
 - Score work (pieces from method book/sheet music)
 - Dismissal – five minutes
- Participating fully and being cooperative with rehearsal procedures means that the student will not talk or be disruptive when the conductor is working with either the full band or a section of the band or an individual. You can use this time to look ahead in your music and work out fingerings you do not know or to practice silently. This is actually valuable practice time for you!
 - Talking during rehearsals or any kind of disruption will not be tolerated. The Discipline Cycle that is used in this class is such that I will give a student two brief verbal or non-verbal reminders. If the student continues to be disruptive I will then ask the student to pack up his/her instrument and leave the rehearsal. The student is not permitted back into the class until we have discussed the behaviour. The student will lose participation and cooperation marks for that class.



STUDENT INFORMATION SHEET

Please return completed form next band class

Name: _____ School: _____

Email: _____

Parents Name(s): _____

Parents Email: _____

Phone Number: _____ (H) _____ (C)

Why did you choose band? _____

My child, _____, has an interest in playing the following three instruments

1. _____
2. _____
3. _____

Remember, that to have a balanced band, it is possible that your child may not get their first choice. The band director will help each student choose an instrument on which they can be successful.

Does anyone in your family play an instrument? YES NO
If yes, what instrument? _____

Has your child ever had any private music lessons? YES NO
If yes, what instrument? _____
If yes, for how long? _____

Please return completed form next band class

